

Surrey Homeless Needs Audit 2016

Background and aim

In December 2015 the 11 borough and district councils committed to leading on a county wide Homeless Health Needs Audit at the beginning of 2016 to help provide an evidence base to inform the improvement of the health offer to homeless people. The audit utilised the Homeless Link Health Needs Audit tool, which was developed in 2010 in partnership with the Department of Health and revised in 2014 to make data more comparable with national surveys on health, and has already been used in a number of other locations across the country.

The Homeless Health Needs Audit provides a framework for gathering and using this information to assess local need and improve healthcare services, using the direct experiences of people who are homeless. In gathering local data, the audit aims to do the following:

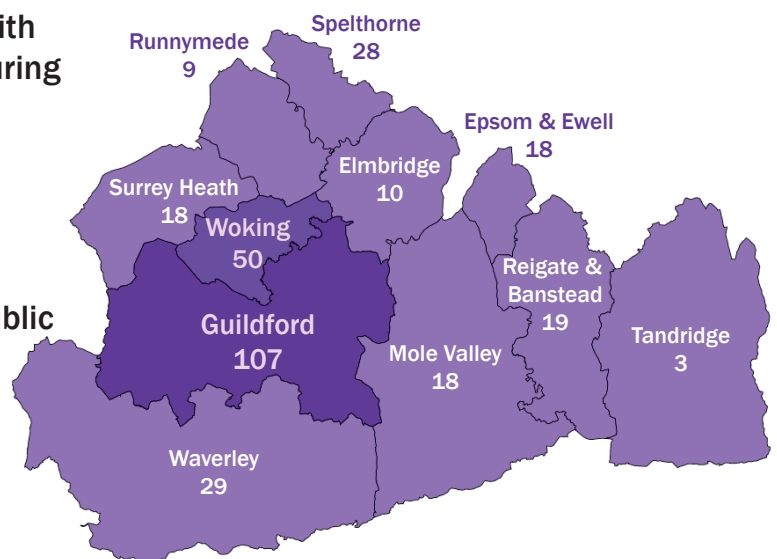
- Increase the evidence available about the health needs of people who are homeless and the wider determinants of their health.
- Bring statutory and voluntary services together to develop responses to local priorities and address gaps in services.
- Give people experiencing homelessness a stronger voice in local commissioning processes.
- Help commissioners understand the effectiveness of their services.

The audit uses a standard set of questions that have been developed by Homeless Link to allow comparison of data with other areas. These cover basic demographic information, access to primary care and acute services along with wider questions on wellbeing and access to other health related services. The standard set of questions are available to view at <http://www.homeless.org.uk>

A sub-group of the county Housing Needs Managers group together with a representative from Homeless Link and Surrey's public health team has supported coordination of the audit. Each borough and district identified and worked with the relevant local providers who went through the questions with those currently supported. This happened during February and March 2016. The full report is available online at Surrey together with an interactive dashboard from January 2017.

For further information please contact phillip.austenreed@surreycc.gov.uk in the Public Health Team

Distribution of responses



About me



Surrey Homelessness Health
Needs Audit 2016



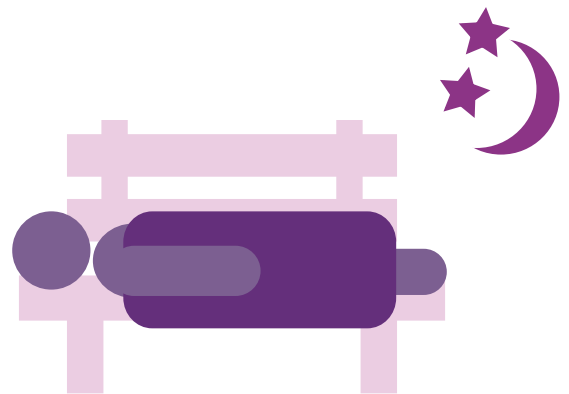
Almost **3 out of 4**
of the respondents are male

39% are permanently unable to work
because of long-term sickness or disability



66% is currently sleeping in hostel
or supported accommodation

19%
spent time in prison



20% experienced sleeping
rough in their lifetime

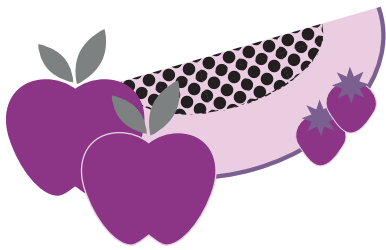
18% have been admitted
to hospital because of a
mental health issue



Health related behaviours



38% eat one or less meals a day



Only **6%** eat the recommended 5 portions of fruit and veg per day

1 in 3

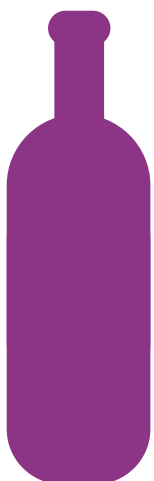
never exercises for 30 minutes or more during the week



80% smoke



46% of the smokers would like to give up



40% use drugs or alcohol to help them cope with their mental health

24%



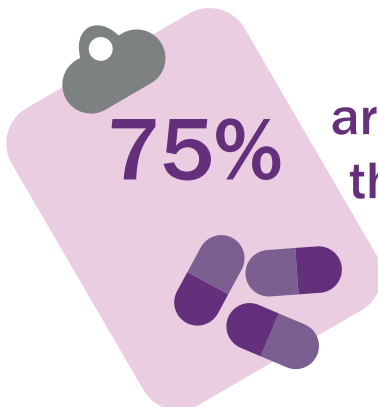
have taken cannabis/weed in the last 12 months

Health status



69% have a long-standing illness, disability or infirmity

77% have been diagnosed with depression;
61% with anxiety disorder or phobia



75%

are receiving support/treatment to help with their mental health problem, but 2 out of 5 of them would still like more help

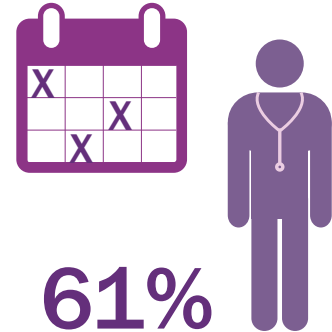


31% thinks their health is worse than it was 12 months ago'



49% suffers from pain or discomfort

Use of health services

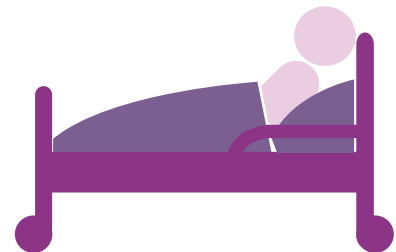


have been to the GP¹ over 3 times in the last 12 months



47% have been to A&E in the last 12 months; **12%** more than 3 times

38% have been admitted to hospital in the last 12 months



 **36%** used an ambulance, and **1 in 4** of those used it more than 3 times in the last 12 months



¹ or homeless healthcare service